

SULIT



BAHAGIAN PEPERIKSAAN DAN PENILAIAN
JABATAN PENDIDIKAN POLITEKNIK
KEMENTERIAN PENDIDIKAN TINGGI

JABATAN KEJURUTERAAN ELEKTRIK

PEPERIKSAAN AKHIR

SESI DISEMBER 2015

EP603: MICROWAVE DEVICES

TARIKH : 12 APRIL 2016

MASA : 8.30AM – 10.30AM

Kertas ini mengandungi **LAPAN (8)** halaman bercetak.

Bahagian A: Struktur (10 soalan)

Bahagian B: Esei (3 soalan)

Dokumen sokongan yang disertakan : Carta Smith dan Lampiran Formula

JANGAN BUKA KERTAS SOALAN INI SEHINGGA DIARAHKAN

(CLO yang tertera hanya sebagai rujukan)

SULIT

SECTION A : 40 MARKS**BAHAGIAN A : 40 MARKAH****INSTRUCTION:**

This section consists of **TEN (10)** structured questions. Answer **ALL** questions

ARAHAN :

*Bahagian ini mengandungi **SEPULUH (10)** soalan berstruktur. Jawab **SEMUA** soalan.*

CLO1
C2**QUESTION 1**

Explain with a proper diagram the Transverse Electromagnetic (TEM) that propagates in free space.

SOALAN 1

Terangkan dengan bantuan gambarajah gelombang elektromagnetik melintang (TEM) yang merambat dalam ruang bebas.

[4 marks]

[4 markah]

CLO1
C1**QUESTION 2**

Identify **FOUR (4)** needs of microwave to communication system.

SOALAN 2

*Kenalpasti **EMPAT(4)** keperluan gelombang mikro kepada Sistem Komunikasi.*

[4 marks]

[4 markah]

CLO1
C1**QUESTION 3**

Give a definition of waveguide and hence state **TWO (2)** types of it.

SOALAN 3

*Takrifkan pandu gelombang kemudian berikan **DUA (2)** contohnya.*

[4 marks]

[4 markah]

CLO1
C2**QUESTION 4**

Differentiate between TEM and TE propagation modes by using vector diagram.

SOALAN 4*Bezakan antara mod perambatan TEM dan TE dengan menggunakan rajah vektor.*

[4 marks]

[4 markah]

QUESTION 5CLO2
C3

A rectangular waveguide with the dimension of 5cm x 2.4 cm is used to propagate at dominant mode. Calculate the cut-off frequency of the waveguide.

SOALAN 5*Satu pandu gelombang segi empat berdimensi 5cm x 2.4cm digunakan untuk merambat pada mod dominan. Kirakan frekuensi potong pandu gelombang tersebut.*

[4 marks]

[4 markah]

QUESTION 6CLO2
C3A load of $(100-j200) \Omega$ is connected to 100Ω transmission line. By using Smith Chart, illustrate the value of Γ (reflection coefficient) and the angle of reflection.**SOALAN 6***Sebuah beban $(100-j200)\Omega$ disambung kepada talian penghantaran bergalangan ciri 100Ω . Dengan menggunakan Carta Smith, ilustrasikan nilai Γ (pekali pantulan) dan sudut pantulan beban tersebut.*

[4 marks]

[4 markah]

CLO2
C3**QUESTION 7**A load of $(100-j100) \Omega$ is connected to 50Ω transmission line. By using Smith Chart, show the value of Z_{max} and Z_{min} .**SOALAN 7***Sebuah beban $(100-j100) \Omega$ disambung kepada talian penghantaran bergalangan ciri 50Ω . Dengan menggunakan Carta Smith, tunjukkan nilai Z_{max} dan Z_{min} .*

[4 marks]

[4 markah]

CLO1
C2**QUESTION 8**

- Describe the function of attenuator in Travelling Wave Tube (TWT).
- What is the function of output cavity in two-cavity klystron.

SOALAN 8

- Perihalkan fungsi pelemah dalam 'Travelling Wave Tube' (TWT).
- Berikan fungsi rongga keluaran dalam klystron dua rongga.

[4 marks]

[4 markah]

CLO1
C2**QUESTION 9**A parabolic antenna is an antenna that uses a parabolic reflector to direct the radio waves. Determine **FOUR (4)** common shapes of parabolic reflector.**SOALAN 9***Antena parabola merupakan sejenis antenna yang menggunakan pemantul parabola untuk mengarahkan isyarat radio. Tentukan **EMPAT (4)** bentuk pemantul parabola yang biasa digunakan.*

[4 marks]

[4 markah]

CLO2
C3**QUESTION 10**

A parabolic antenna with a dish diameter 4 m operates at frequency 6 GHz. Calculate the wavelength of the signal and antenna gain in dB.

SOALAN 10*Sebuah antena parabola dengan diameter 4 m beroperasi pada frekuensi 6 GHz. Kirakan panjang gelombang isyarat dan gandaan antena dalam dB.*

[4 marks]

[4 markah]

SECTION B : 60 MARKS

BAHAGIAN B : 60 MARKAH

INSTRUCTION:

This section consists of **THREE (3)** essay questions. Answer **ALL** questions.

ARAHAN:

Bahagian ini mengandungi **TIGA (3)** soalan esei. Jawab **SEMUA** soalan.

CLO2
C3

QUESTION 1

SOALAN 1

- a) Calculate the frequency of the light if the light has a wavelength of 400m.

Kira nilai frekuensi bagi cahaya sekiranya sekiranya panjang gelombang bagi cahaya tersebut adalah 400m.

[4 marks]

[4 markah]

- b) Based on the information in Table B1 below, calculate the value of cutoff frequency (f_c), waveguide wavelength (λ_g), group velocity in the waveguide (V_g), phase velocity (V_p) and characteristic impedance (Z_0) for mode TE_{10} .

Berpandukan maklumat dalam Jadual B1 di bawah, dapatkan nilai bagi frekuensi potong (f_c), panjang gelombang pandu (λ_g), halaju perambatan isyarat di dalam pandu gelombang (V_g), halaju fasa (V_p) dan galangan ciri (Z_0) bagi mod TE_{10} .

Waveguide <i>Pandu gelombang</i>	Rectangular <i>Segiempat</i>
External dimension <i>Dimensi luaran</i>	(2.94 x 1.27) cm
Wall Thickness <i>Ketebalan dinding</i>	0.2 cm
Operational frequency <i>Frekuensi operasi</i>	10 GHz
Mode <i>Mod</i>	Dominant <i>Dominan</i>

Table B1 / *Jadual B1*

[16 marks]

[16 markah]

CLO2
C3

QUESTION 2

SOALAN 2

- a) A voltage standing wave caused by a mismatched load has a maximum value of 50V and a minimum value of 30V. Calculate Standing Wave Ratio, SWR (dB) and reflection coefficient, Γ .

Voltan bagi gelombang pegun disebabkan oleh beban tak sepadan mempunyai nilai maksimum 50V dan nilai minimum 30V. Kirakan Nisbah Gelombang Pegun, SWR (dB) dan pekali pantulan, Γ .

[8 marks]

[8 markah]

- b) A load impedance of $(150 + j75)\Omega$ is connected to a line that has characteristic impedance equal to 75Ω . By using Smith Chart, locate the position of normalized load impedance, voltage standing wave ratio, angle coefficient and reflection coefficient. Then, locate the input impedance, Z_{in} when the length of the transmission line is 0.05λ .

Galangan beban $(150 + j75)\Omega$ disambungkan kepada talian yang mempunyai galangan ciri bernilai 75Ω . Gunakan carta Smith untuk menentukan kedudukan galangan beban ternormal, nisbah voltan gelombang pegun, sudut pantulan dan pekali pantulan. Seterusnya, cari galangan masukan, Z_{in} apabila jarak talian penghantaran adalah 0.05λ .

[12 marks]

[12 markah]

QUESTION 3

SOALAN 3

CLO1
C2

a) Explain the operation of the microwave source shown in Figure B 3(a) below.

Terangkan operasi sumber gelombang mikro yang ditunjukkan dalam Rajah B 3(a) di bawah.

[7 marks]

[7 markah]

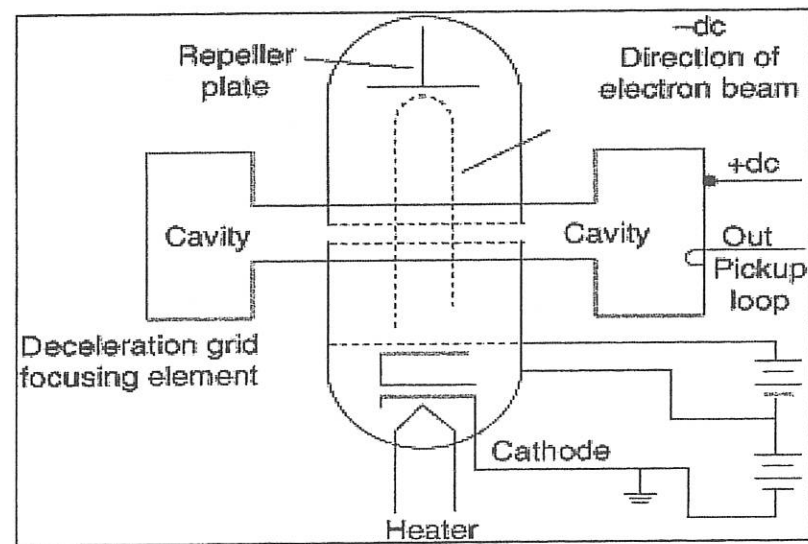


Figure B 3(a) / Rajah B 3(a)

CLO2
C2

b) A 2.5m diameter parabolic reflector emits a power of 5W using the feeder mechanism at a frequency of 5 GHz with antenna aperture efficiency as high as 60%. Determine the wavelength of the signal (λ), beam width of the antenna (Θ), effective aperture area (A_e), antenna gain (G (dB)) and power transmission (P_T (dB)).

Sebuah pemantul parabola berdiameter 2.5m memancarkan kuasa sebanyak 5W menggunakan mekanisma penyuaip pada frekuensi 5 GHz dengan kecekapan bukaan antenna setinggi 60%. Tentukan nilai panjang gelombang isyarat (λ), sudut lebar alur antenna (Θ), luas bukaan berkesan (A_e), gandaan antenna (G (dB)), dan kuasa penghantaran antenna (P_T (dB)).

[13 marks]

[13 markah]

SOALAN TAMAT

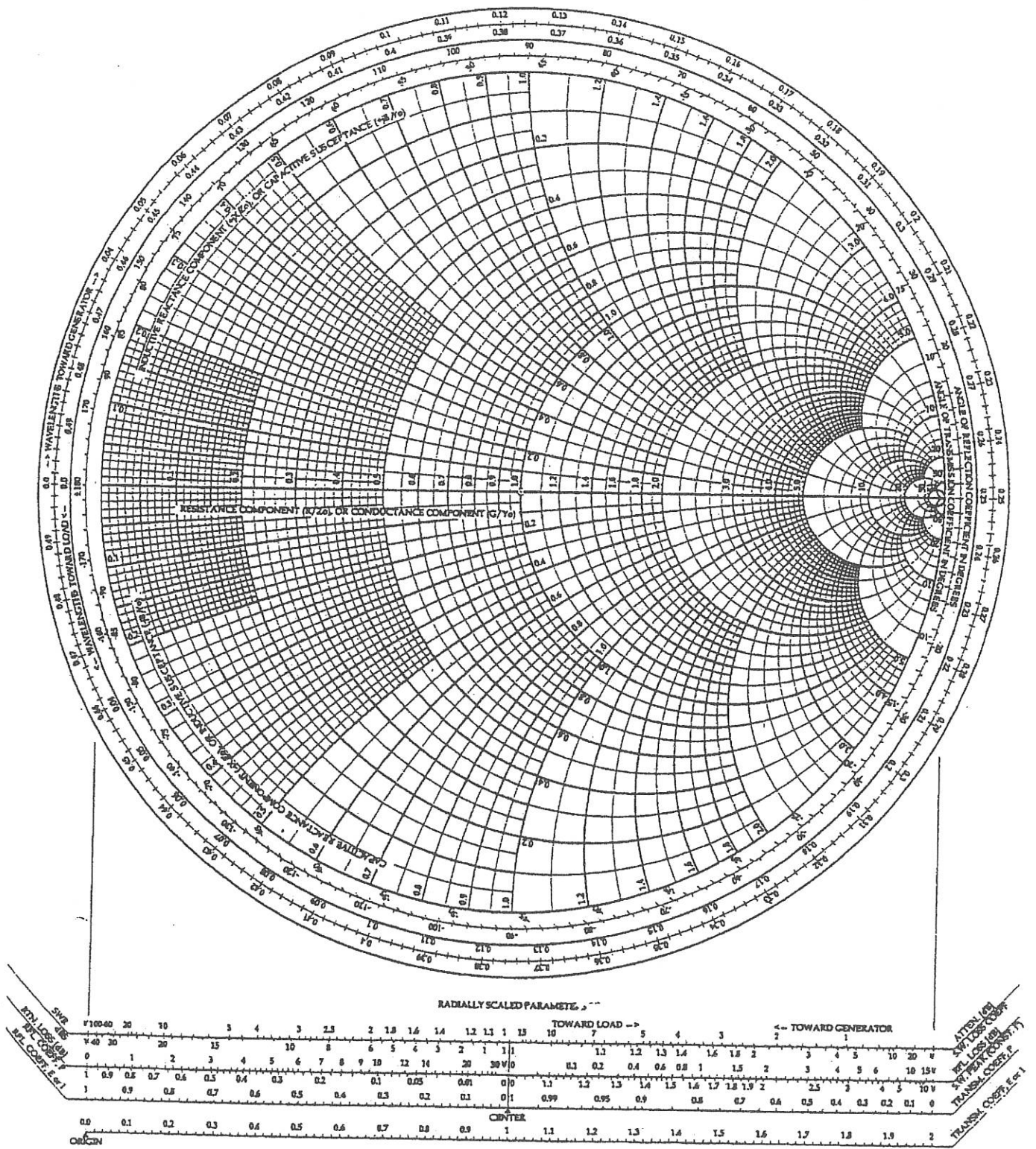
APPENDIX EP603

$c = \lambda f = (3 \times 10^8) \text{ms}^{-1}$																													
Rectangular Waveguide	Circular Waveguide																												
Wavelength $\lambda_c = \frac{2}{\sqrt{\left(\frac{m}{a}\right)^2 + \left(\frac{n}{b}\right)^2}}$	Wavelength $\lambda_c = \frac{\pi d}{S_{mn}}$																												
Frequency, $f_c = \frac{c}{2} \sqrt{\left(\frac{m}{a}\right)^2 + \left(\frac{n}{b}\right)^2}$ $f_c = \frac{1}{2\sqrt{\mu\epsilon}} \sqrt{\left(\frac{m}{a}\right)^2 + \left(\frac{n}{b}\right)^2}$ $\mu_0 = 4\pi \times 10^{-7} \text{H/m}$ $\epsilon_0 = 8.854 \times 10^{-12} \text{F/m}$	Frequency, $f_c = \frac{cS_{mn}}{\pi d}$ Bessel Equation's Table for Circular Waveguide: <table border="1" style="margin-left: auto; margin-right: auto;"> <thead> <tr> <th>Mode</th> <th>S_{mn}</th> <th>Mode</th> <th>S_{mn}</th> </tr> </thead> <tbody> <tr> <td>TE₀₁</td> <td>3.832</td> <td>TM₀₁</td> <td>2.405</td> </tr> <tr> <td>TE₁₁</td> <td>1.841</td> <td>TM₁₁</td> <td>3.832</td> </tr> <tr> <td>TE₂₁</td> <td>3.050</td> <td>TM₂₁</td> <td>5.136</td> </tr> <tr> <td>TE₀₂</td> <td>7.016</td> <td>TM₀₂</td> <td>5.520</td> </tr> <tr> <td>TE₁₂</td> <td>5.330</td> <td>TM₁₂</td> <td>7.016</td> </tr> <tr> <td>TE₂₂</td> <td>6.710</td> <td>TM₂₂</td> <td>8.420</td> </tr> </tbody> </table>	Mode	S _{mn}	Mode	S _{mn}	TE ₀₁	3.832	TM ₀₁	2.405	TE ₁₁	1.841	TM ₁₁	3.832	TE ₂₁	3.050	TM ₂₁	5.136	TE ₀₂	7.016	TM ₀₂	5.520	TE ₁₂	5.330	TM ₁₂	7.016	TE ₂₂	6.710	TM ₂₂	8.420
Mode	S _{mn}	Mode	S _{mn}																										
TE ₀₁	3.832	TM ₀₁	2.405																										
TE ₁₁	1.841	TM ₁₁	3.832																										
TE ₂₁	3.050	TM ₂₁	5.136																										
TE ₀₂	7.016	TM ₀₂	5.520																										
TE ₁₂	5.330	TM ₁₂	7.016																										
TE ₂₂	6.710	TM ₂₂	8.420																										
$\lambda_{\text{guide}} = \lambda_{\text{pandu}} = \frac{\lambda_o}{\sqrt{1 - \left(\frac{\lambda_o}{\lambda_c}\right)^2}}$ meter or	$\lambda_{\text{guide}} = \lambda_{\text{pandu}} = \frac{\lambda_o}{\sqrt{1 - \left(\frac{f_c}{f_o}\right)^2}}$ meter																												
$v_{\text{group}} = v_{\text{kumpulan}} = c \sqrt{1 - \left(\frac{\lambda_o}{\lambda_c}\right)^2} \text{ms}^{-1}$ or	$v_{\text{group}} = v_{\text{kumpulan}} = c \sqrt{1 - \left(\frac{f_c}{f_o}\right)^2} \text{ms}^{-1}$																												
$v_{\text{phase}} = v_{\text{fasa}} = \frac{c}{\sqrt{1 - \left(\frac{\lambda_o}{\lambda_c}\right)^2}} \text{ms}^{-1}$ or	$v_p = \frac{c}{\sqrt{1 - \left(\frac{f_c}{f_o}\right)^2}} \text{ms}^{-1}$																												
$Z_{o(\text{TE})} = \frac{377}{\sqrt{1 - \left(\frac{\lambda_o}{\lambda_c}\right)^2}}$ or	$Z_{o(\text{TE})} = \frac{377}{\sqrt{1 - \left(\frac{f_c}{f_o}\right)^2}}$																												
$Z_{o(\text{TM})} = 377 \times \sqrt{1 - \left(\frac{\lambda_o}{\lambda_c}\right)^2}$ or	$Z_{o(\text{TM})} = 377 \times \sqrt{1 - \left(\frac{f_c}{f_o}\right)^2}$																												
$Z_{\text{IN}} = j Z_{\text{TEmn}} \tan(\beta l); \quad Z_{\text{IN}} = j Z_{\text{TMmn}} \tan(\beta l); \quad \beta = \frac{2\pi f_o}{c} \sqrt{1 - \left(\frac{f_c}{f_o}\right)^2}$																													

APPENDIX EP603

$\text{front to back ratio} = \frac{\text{front lobe power}}{\text{back lobe power}}$	$\text{front to side ratio} = \frac{\text{front lobe power}}{\text{side lobe power}}$
Reflection Coefficient, $\Gamma = \left(\frac{Z_o - Z_L}{Z_L + Z_L}\right)$	VSWR = $\left(\frac{1 + \Gamma }{1 - \Gamma }\right)$
(Parabolic Antenna) Beam Width, $\alpha = \frac{70\lambda}{D}$	Horn Antenna, Beam Width, $\alpha = \frac{80\lambda}{W}$
$P_T = \eta \left(\frac{\pi D}{\lambda}\right)^2$	$P_T = (P_R G)$
$G(\text{dB}) = 10 \log \frac{4\pi k A}{\lambda^2}$	Attenuation (dB) = $\frac{54z}{\lambda c}$

The Smith Chart



RADIALLY SCALED PARAMETERS

