

SULIT



**BAHAGIAN PEPERIKSAAN DAN PENILAIAN
JABATAN PENDIDIKAN POLITEKNIK
KEMENTERIAN PENDIDIKAN TINGGI**

JABATAN KEJURUTERAAN ELEKTRIK

PEPERIKSAAN AKHIR

SESI JUN 2017

DEJ3143 : INSTRUMENTATION

TARIKH : 03 NOVEMBER 2017

MASA : 8.30 PAGI - 10.30 PAGI (2 JAM)

Kertas ini mengandungi **SEPULUH (10)** halaman bercetak.

Bahagian A: Objektif (10 soalan)

Bahagian B: Struktur (4 soalan)

Bahagian C: Esei (2 soalan)

Dokumen sokongan yang disertakan : Tiada

JANGAN BUKA KERTAS SOALAN INI SEHINGGA DIARAHKAN

(CLO yang tertera hanya sebagai rujukan)

SULIT

SECTION A : 10 MARKS
BAHAGIAN A : 10 MARKAH

This section consists of **TEN (10)** multiple choice questions. Mark your answers in the OMR form provided.

ARAHAN :

*Bahagian ini mengandungi **SEPULUH (10)** soalan aneka pilihan. Tandakan jawapan anda di dalam borang OMR yang disediakan.*

CLO1
C1

1. Name the device that converts energy into motion. It also can be used to apply force.

Namakan peranti yang menukarkan tenaga kepada pergerakan. Ia juga digunakan untuk memberikan daya.

- A. Actuator
Penggerak
- B. Transmitter
Pemancar
- C. Sensor
Penderia
- D. Amplifier
Penguat

CLO1
C2

2. Relate the following characteristics to the suitable device:

Kaitkan ciri-ciri berikut dengan peranti yang sesuai:

- ✓ convert thermal energy into electrical energy
menukar tenaga haba kepada tenaga elektrik
 - ✓ works by creating a voltage difference between two wires that is proportional to the temperature at the junction called Seebeck current
berfungsi menghasilkan beza voltan di antara dua wayar yang berkadar terus dengan suhu pada titik pertemuan yang dipanggil arus Seebeck
- A. Resistance Temperature Detector
Pengesan Kerintangan Suhu
 - B. Thermistor
Termistor
 - C. Light Detector Resistance
Pengesan Kerintangan Cahaya
 - D. Thermocouple
Termo gandingan

CLO1
C2

3. Choose the type of valve which is also known as non-return or check valve.

Pilih jenis injap yang dikenali juga sebagai injap sehalu atau injap periksa.

- A. Directional control valve
Terarah
- B. On-Off valve
Buka-tutup
- C. Pressure regulator valve
Pengatur tekanan
- D. Flow-rate regulator valve
Pengatur kadar aliran

CLO2
C3

4. _____ can convert power (usually from an electric or diesel or gasoline engine) into kinetic energy by pressurizing and compressing air, which is then released in quick bursts. Choose the device that meant it.

_____ boleh menukarkan kuasa (biasanya daripada enjin elektrik atau diesel atau gasoline) kepada tenaga kinetic dengan udara yang mampat dan bertekanan yang dilepaskan dengan ledakan pantas. Pilih peralatan yang dimaksudkan.

- A. Air Compressor
Pemampat Udara
- B. Air Cooler
Penyejuk udara
- C. Air Filter
Penapis udara
- D. Air Regulator
Pengatur udara

CLO1
C2

5. The following are the analogy of hydraulic to electrical equipment. Pick the wrong combination.

Berikut adalah analogi perkakasan hidraulik dengan perkakasan elektrik. Pilih kombinasi yang salah.

- A. Hydraulic pump – Generator
Pam hidraulik – penjana
- B. Hydraulic motor – Electric motor
Motor hidraulik – motor elektrik
- C. Hoses – Wire
Hos- wayar
- D. Accumulator – Transformer
Akumulator – pengubah

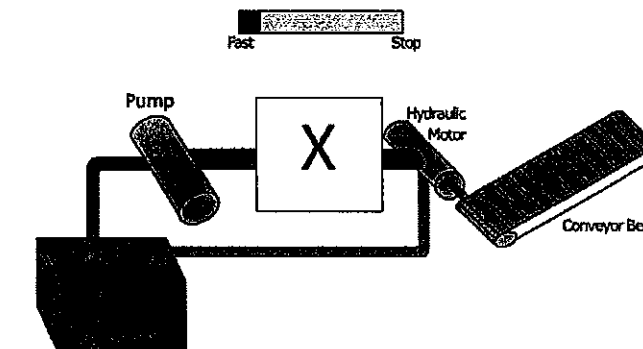
CLO2
C3

Figure A6 / Rajah A6

6. Based on the operation performed in the hydraulic system as Figure A6, choose the most suitable valve that can be used to the box X.

Berdasarkan operasi yang dilakukan dalam sistem hidraulik pada Rajah A6, pilih injap yang paling sesuai digunakan pada kotak X.

- A. Selector valve
Injap pemilih
- B. Needle valve
Injap jarum
- C. Relief valve
Injap Pelepas
- D. Check valve
Injap periksa

CLO1
C1 7. The followings are disadvantages of globe valve. Select the **INCORRECT** answer.
Berikut adalah kelemahan injap glob. Pilih jawapan yang SALAH.





- Heavy
Berat
- Expensive
Mahal
- Narrow operating temperature range
Julat suhu operasi kecil
- Unidirectional
Sehala

CLO1
C2 8. Identify the most suitable valve which can fulfill the industry requirement as below:
Kenalpasti injap yang paling sesuai untuk memenuhi keperluan industri seperti di bawah:

- can be operated fully open or fully closed
boleh beroperasi dalam terbuka penuh atau tertutup penuh
- used for isolation clear water
digunakan untuk pengasingan air
- have low pressure drops
kejatuhan tekanan adalah rendah
- open and close quickly
buka dan tutup dengan cepat
- easily actuated
mudah dikendalikan

- Ball valve
Injap bebola
- Butterfly valve
Injap rama-rama
- Globe valve
Injap glob
- Angle valve
Injap sudut

CLO1
C1 9. Identify the P&ID symbol for pneumatic gate valve.
Kenalpasti simbol P&ID yang betul bagi injap pintu pneumatik.

- 
- 
- 
- 

CLO1
C2 10.

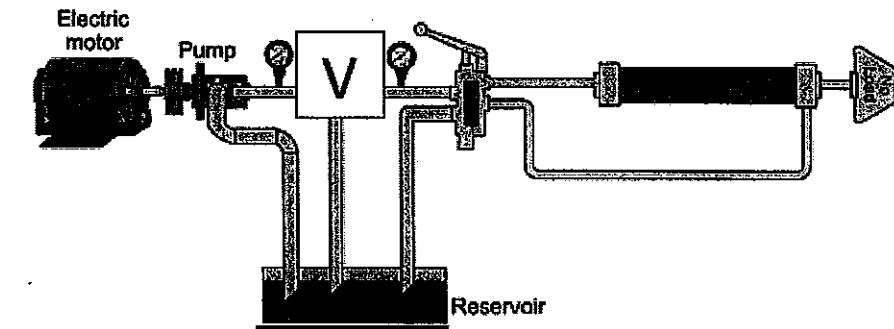






Diagram A10/ Rajah A10: Process Diagram of hydraulic system

By referring to the V box in **Diagram A10**, match the suitable valve by its symbol that can perform the operation as in the process diagram.
*Merujuk kepada **Rajah A10**, pilih injap berdasarkan simbol yang boleh menjalankan operasi seperti dalam gambarajah blok tersebut.*

- 
- 
- 
- 

SECTION B : 60 MARKS
BAHAGIAN B : 60 MARKAH

INSTRUCTION:

This section consists of **FOUR (4)** structured questions. Answer **ALL** questions.

ARAHAN:

Bahagian ini mengandungi **EMPAT (4)** soalan berstruktur. Jawab semua soalan.

QUESTION 1
SOALAN 1

- CLO1
C1 a. State **THREE (3)** examples of passive transducer.
Nyatakan TIGA(3) contoh transduser pasif
- [3 marks]
[3 markah]
- CLO1
C2 b. Describe the criteria to select a correct transducer.
Jelaskan kriteria pemilihan transduser yang betul.
- [5 marks]
[5 markah]
- CLO2
C3 c. With the aid of diagram, explain the operating principle of the thermocouple.
Dengan bantuan gambarajah, terangkan prinsip kendalian termogandingan.
- [7 marks]
[7 markah]

QUESTION 2
SOALAN 2

- CLO1
C1 a. State **THREE (3)** advantages of pneumatic system.
Nyatakan TIGA (3) kelebihan sistem pneumatik.
- [3 marks]
[3 markah]
- CLO1
C2 b. Describe any **FIVE (5)** blocks from diagram of pneumatic system.
Huraikan LIMA (5) blok daripada rajah sistem pneumatik.
- [5 marks]
[5 markah]
- CLO2
C3 c. Sketch the symbols of flow valve, 3/2 way valve and 5/3 way valve.
Lakarkan simbol injap aliran, injap 3/2 hala dan 5/3 hala.
- [7 marks]
[7 markah]

QUESTION 3
SOALAN 3

- CLO1
C1 a. State **THREE (3)** applications of hydraulic system in industry.
Nyatakan TIGA (3) aplikasi sistem hidraulik di industri.
- [3 marks]
[3 markah]
- CLO1
C2 b. Sketch symbols of pump, motor, tank, filter and relief valve.
Lakarkan simbol pam, motor, tangki, penapis dan injap pelega.
- [5 marks]
[5 markah]
- CLO2
C3 c. Explain Pascal's Law with aid of diagram and state the formula.
Terangkan hukum pascal's dengan berbantuan rajah dan nyatakan formulanya.
- [7 marks]
[7 markah]

QUESTION 4
SOALAN 4

- CLO1
C1 a. Define transmitter.
Berikan definisi pemancar.
- [3 marks]
[3 markah]
- CLO1
C2 b. Sketch pneumatic, hydraulic, electric, data link and capillary tubing line symbols.
Lakarkan simbol garisan pneumatik, hidraulik, elektrik, pautan data dan tiub kapilari.
- [5 marks]
[5 markah]
- CLO2
C3 c. Explain about pressure to current converter and current to pressure converter.
Huraikan berkenaan penukar tekanan untuk arus dan penukar arus untuk tekanan.
- [7 marks]
[7 markah]

SECTION C: 30 MARKS
BAHAGIAN C: 30 MARKAH

INSTRUCTION:

This section consists of **TWO (2)** essay questions. Answer **ALL** questions.

ARAHAN:

Bahagian ini mengandungi **DUA (2)** soalan esei. Jawab **SEMUA** soalan.

CLO1
C3 **QUESTION 1**
SOALAN 1

With an appropriate diagram, explain the operation of 4/2-way valve used to control double-acting pneumatic cylinder in both conditions: **EXTEND** and **RETRACT**.

Dengan gambarajah yang sesuai, terangkan kendalian bagi injap 4/2 hala digunakan untuk mengawal silinder pneumatik dua tindakan dalam kedua-dua keadaan: **MELANJUTKAN** dan **MENARIK**.

[15 marks]
[15 markah]

QUESTION 2
SOALAN 2

CLO2
C3

Explain the operation of the circuit diagram in **Figure C2** below.

Terangkan operasi litar berikut dalam **Rajah C2** di bawah.

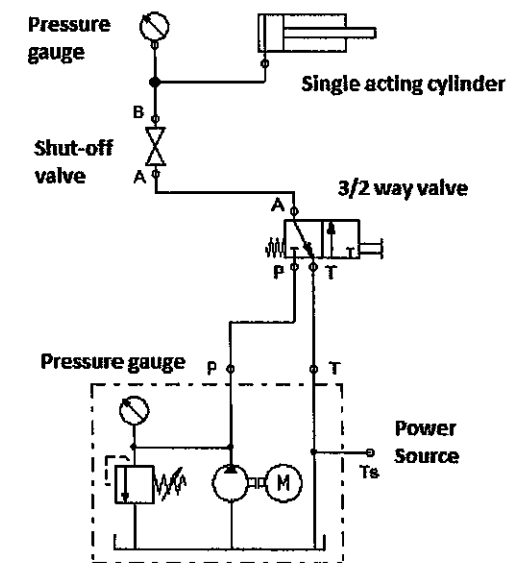


Figure C2 / Rajah C2

[15 marks]
[15 markah]

SOALAN TAMAT